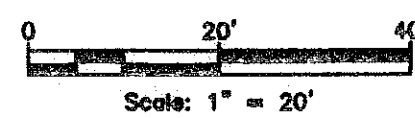
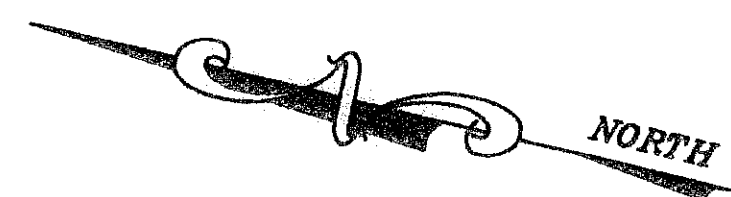


116

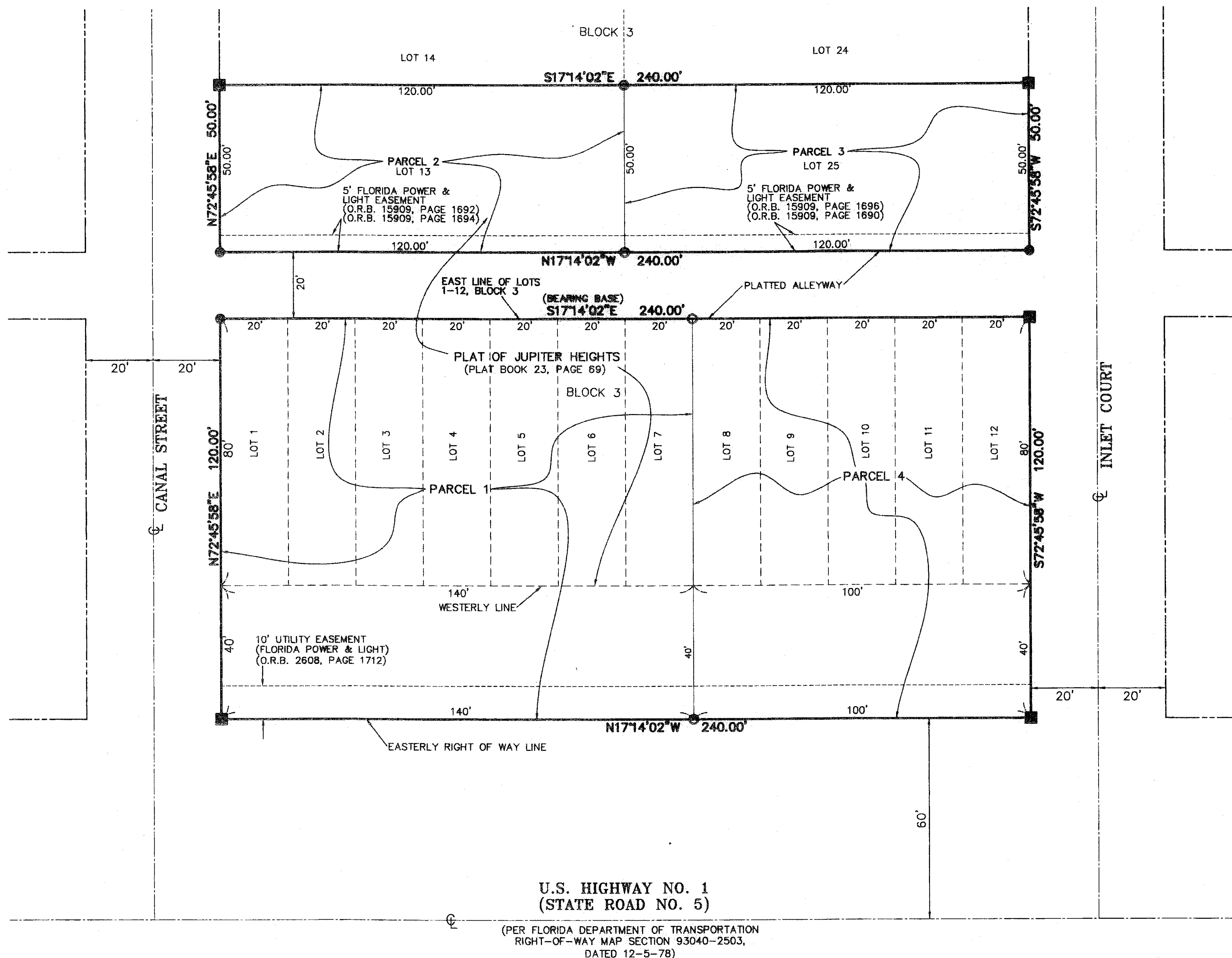
REGIONS TEQUESTA

BEING A REPLAT OF THE PLAT OF JUPITER HEIGHTS,
AS RECORDED IN PLAT BOOK 23, PAGE 69,
PUBLIC RECORDS OF PALM BEACH COUNTY, FLORIDA
LYING IN SECTION 30, TOWNSHIP 40 SOUTH, RANGE 43 EAST
VILLAGE OF TEQUESTA, PALM BEACH COUNTY, FLORIDA



LEGEND

- ☉ - DENOTES CENTERLINE
- - DENOTES P.R.M. (PERMANENT REFERENCE MONUMENT) SET NO. LB 7622
- - 4"x4" CONCRETE MONUMENT
- O.R.B. - DENOTES OFFICIAL RECORDS BOOK
- P.G. - DENOTES PAGE
- - SET 5/8" IRON ROD & CAP "LB 7622"
- - PK NAIL & DISK SET "PRM LB 7622"



U.S. HIGHWAY NO. 1
(STATE ROAD NO. 5)

(PER FLORIDA DEPARTMENT OF TRANSPORTATION
RIGHT-OF-WAY MAP SECTION 93040-2503,
DATED 12-5-78)

SURVEYOR'S NOTES

1. THIS PLAT, AS RECORDED IN ITS GRAPHIC FORM, IS THE OFFICIAL DEPICTION OF THE SUBDIVIDED LANDS DESCRIBED HEREIN AND WILL IN NO CIRCUMSTANCES BE SUPPLANTED IN AUTHORITY BY ANY OTHER GRAPHIC OR DIGITAL FORM OF THE PLAT. THERE MAY BE ADDITIONAL RESTRICTIONS THAT ARE NOT RECORDED ON THIS PLAT THAT MAY BE FOUND IN THE PUBLIC RECORDS OF PALM BEACH COUNTY.
2. THERE SHALL BE NO BUILDINGS OR ANY KIND OF CONSTRUCTION PLACED ON UTILITY EASEMENTS. LANDSCAPING OF UTILITY EASEMENTS SHALL REQUIRE PRIOR APPROVAL OF THE VILLAGE OF TEQUESTA AND ALL UTILITIES OCCUPYING SAME.

BEARING BASE

THE EAST LINE OF LOTS 1-12, BLOCK 3, OF THE PLAT OF JUPITER HEIGHTS, AS RECORDED IN PLAT BOOK 23, PAGE 69, PUBLIC RECORDS OF PALM BEACH COUNTY, FLORIDA IS TAKEN TO BEAR SOUTH 17°14'02" EAST, AND ALL OTHER BEARINGS SHOWN HEREON ARE RELATIVE THERETO.

THIS INSTRUMENT PREPARED BY:
BRIAN C. KIERNAN
PROFESSIONAL SURVEYOR AND MAPPER
FLORIDA LICENSE NUMBER 6101
FOR BOYLE ENGINEERING CORPORATION
3550 S.W. CORPORATE PARKWAY
PALM CITY, FLORIDA 34990
LB 7622

BOYLE ENGINEERING
3550 S.W. Corporate Parkway, Palm City, Florida 34990
T 772.286.3663 F 772.286.3925
BPR & FBPE License No's: 2005 & LB 7622
www.boyle.aecom.com

BOYLE | AECOM

2 of 2
Sheet of

Drawing Name: P:\17159\Boyle\17159\17159.plt Date: 7/21/2008 10:28 AM - By: Brian C. Kiernan